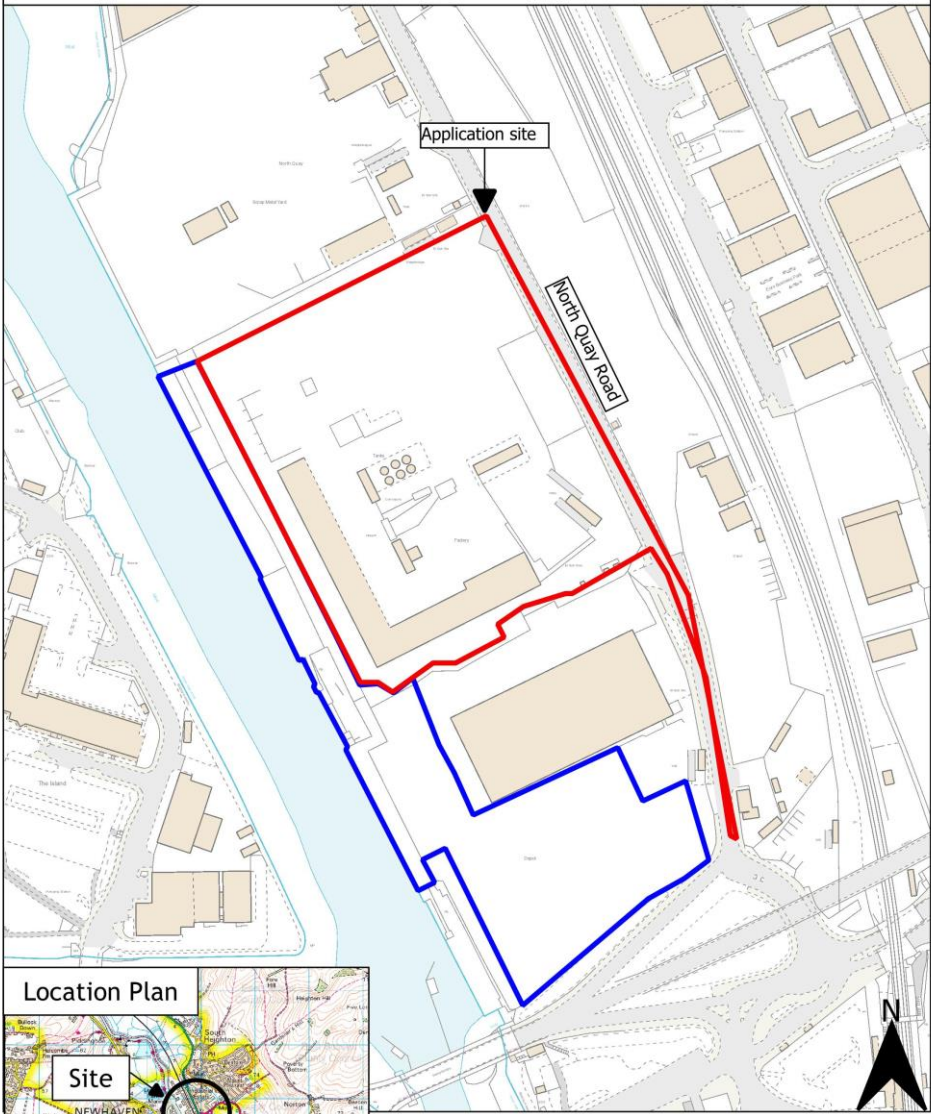


East Sussex County Council Planning Committee 12 November 2025

LW/894/CM– Plots 6 & 7, North Quay Road, Newhaven BN9 0AB For F M Conway

An alternate site layout (part retrospective) including the external processing of asphalt planings, temporary storage of containers, the installation of an LPG storage facility, the relocation of car and lorry parking, and a minor alteration to the configuration of acoustic fencing.

LW/894/CM - Plots 6 & 7, North Quay Road, Newhaven BN9 0AB



Location Plan



0 30 60 90 120 150 180 m

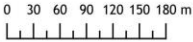
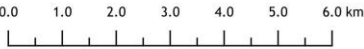
Rupert Clubb BEng (Hons) CEng MICE,
Director of Communities, Economy and
Transport, East Sussex County Council

Reproduced from the Ordnance Survey mapping with the permission
of the Controller of Her Majesty's Stationery Office © Crown
Copyright. Unauthorised reproduction infringes Crown copyright and
may lead to prosecution or civil proceedings. East Sussex County
Council, 100019601, 2017

LW/894/CM - Plots 6 & 7, North Quay Road, Newhaven BN9 0AB

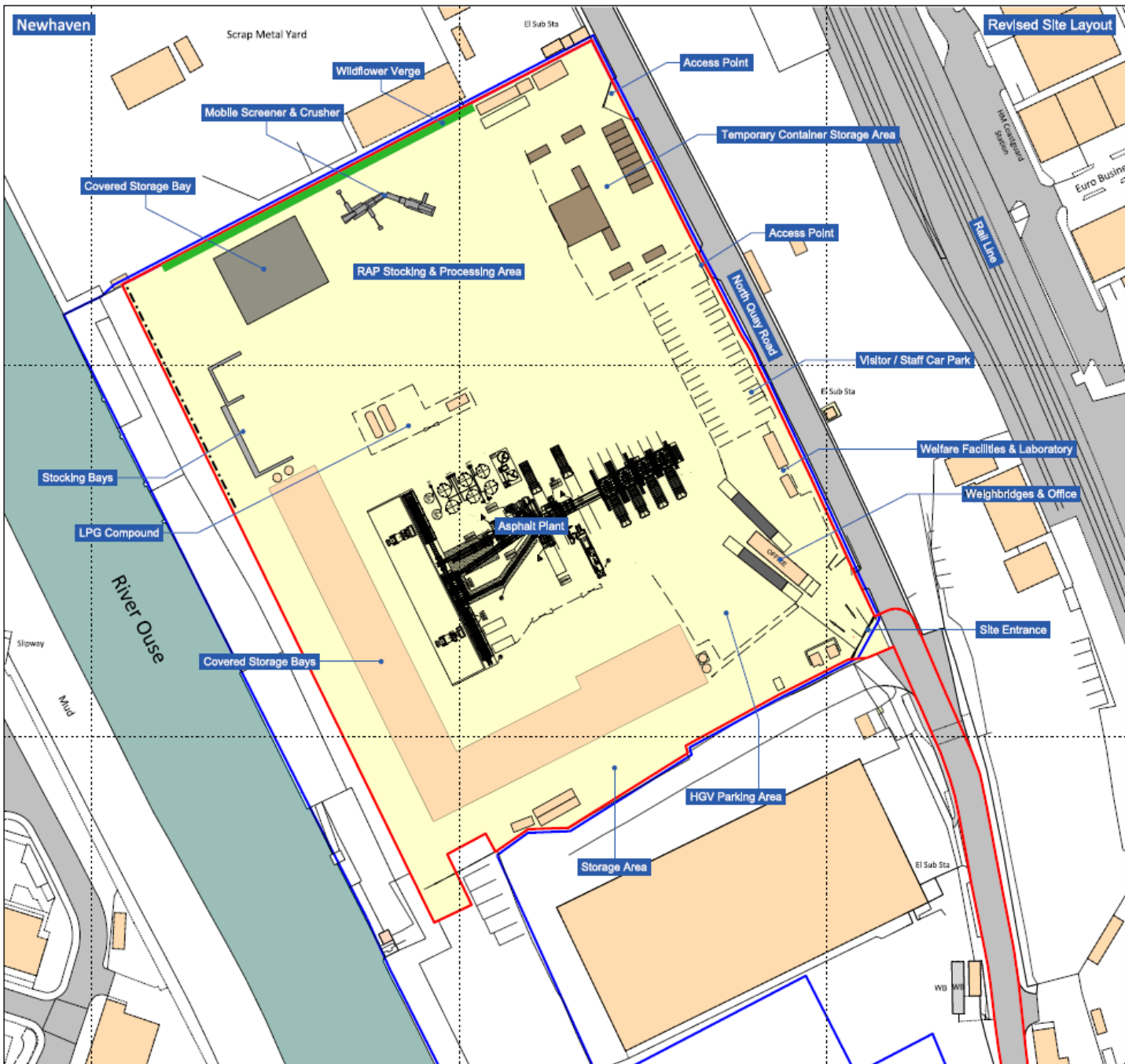


Location Plan



Rupert Clubb BEng (Hons) CEng MICE,
Director of Communities, Economy and
Transport, East Sussex County Council

Reproduced from the Ordnance Survey mapping with the permission
of the Controller of Her Majesty's Stationery Office © Crown
Copyright. Unauthorised reproduction infringes Crown copyright and
may lead to prosecution or civil proceedings. East Sussex County
Council, 100019601, 2017



Legend

- Application Boundary
- Other Land Under the Control of the Applicant
- Buildings, Roads & Tracks
- River Ouse
- Existing Hardstanding
- Containers
- Acoustic Fence
- Wildflower Verge (2m x 95m)

SCALE (metres)

0 50

consulting limited
chartered surveyors

PROJECT
Newhaven

DRAWING TITLE
Revised Site Layout

DATE
September 2025

SCALE
1:1,000 @ A3

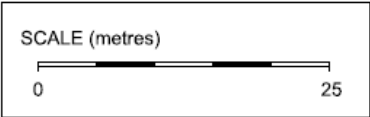
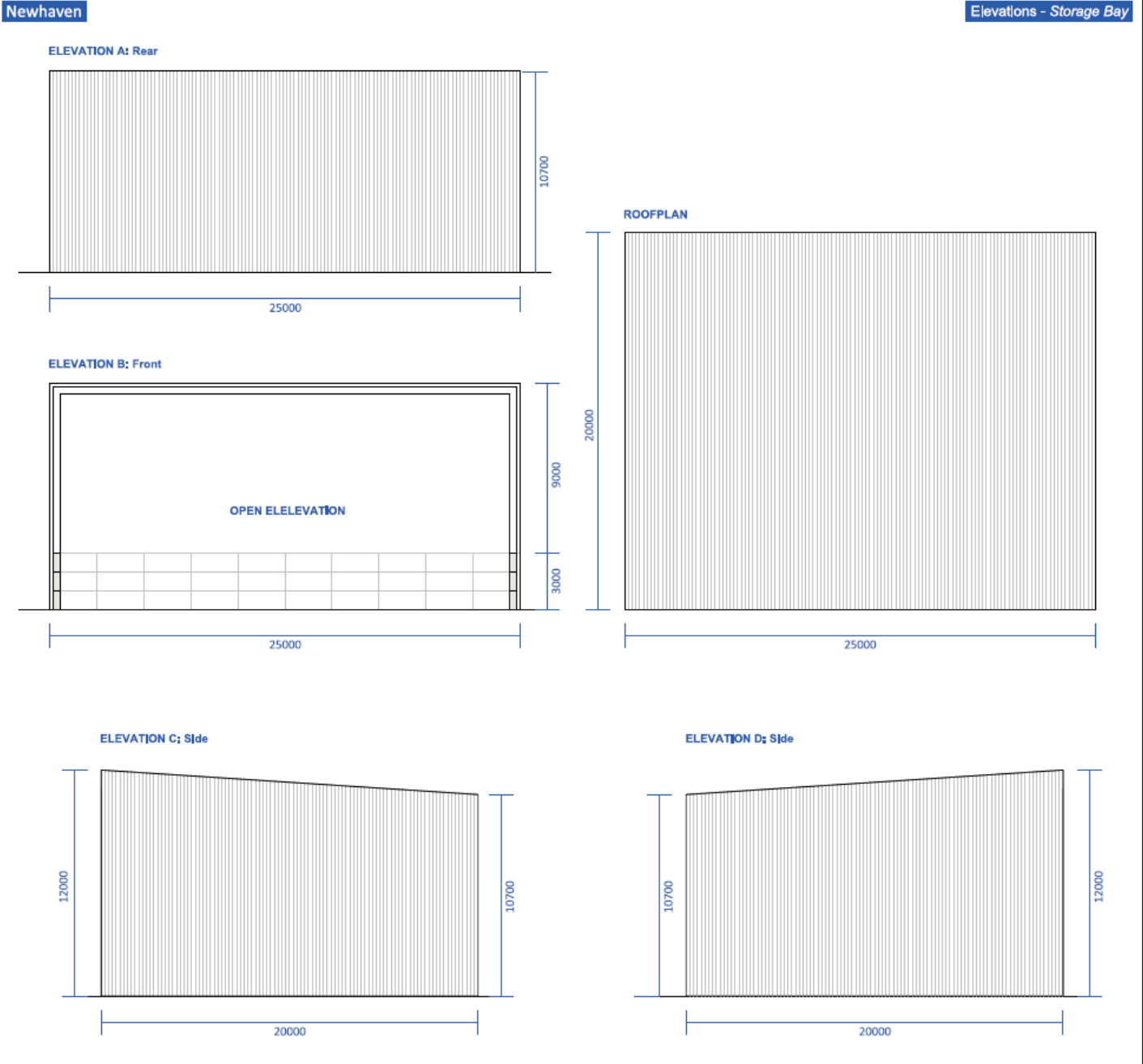
DRAWING No.
KD.NHVN.5.D.001A

DRAWING STATUS
FINAL

Reproduced from Ordnance Survey digital map data © Crown Copyright. All rights reserved. Licence number 0100031673

THIS DRAWING MAY NOT BE USED WITHOUT CONSENT OF PDE CONSULTING LTD

01284 764985 • www.pdeconsulting.co.uk



PROJECT
Newhaven

DRAWING TITLE
Elevations - Storage Bay

DATE
March 2025

SCALE
1:200 @ A3

DRAWING NO.
KD.NHVN.5.D.008

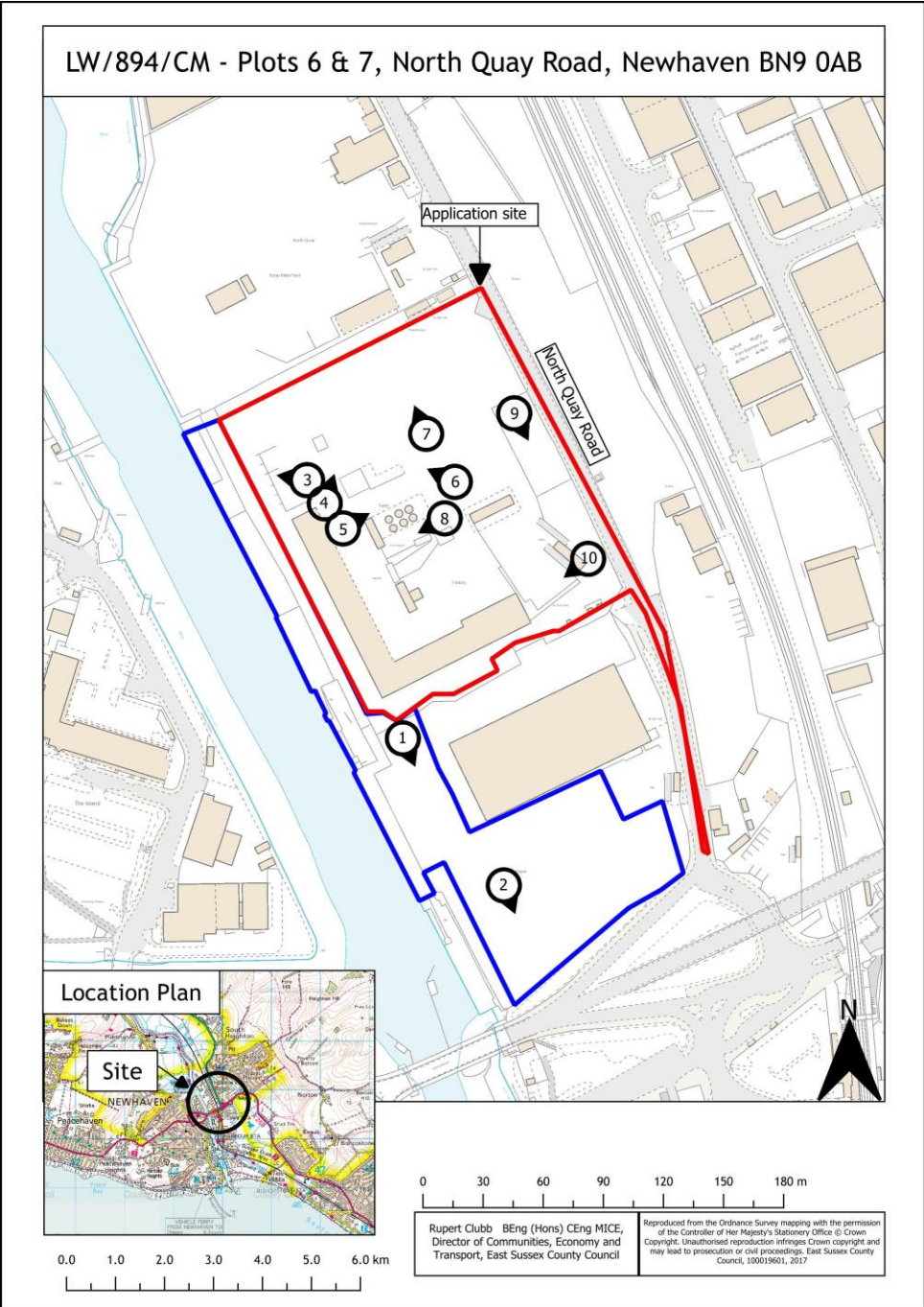
DRAWING STATUS
FINAL



Reproduced from Ordnance Survey digital map data © Crown Copyright. All rights reserved. License number 0100031673

THIS DRAWING MAY NOT BE USED WITHOUT CONSENT OF PDE CONSULTING LTD

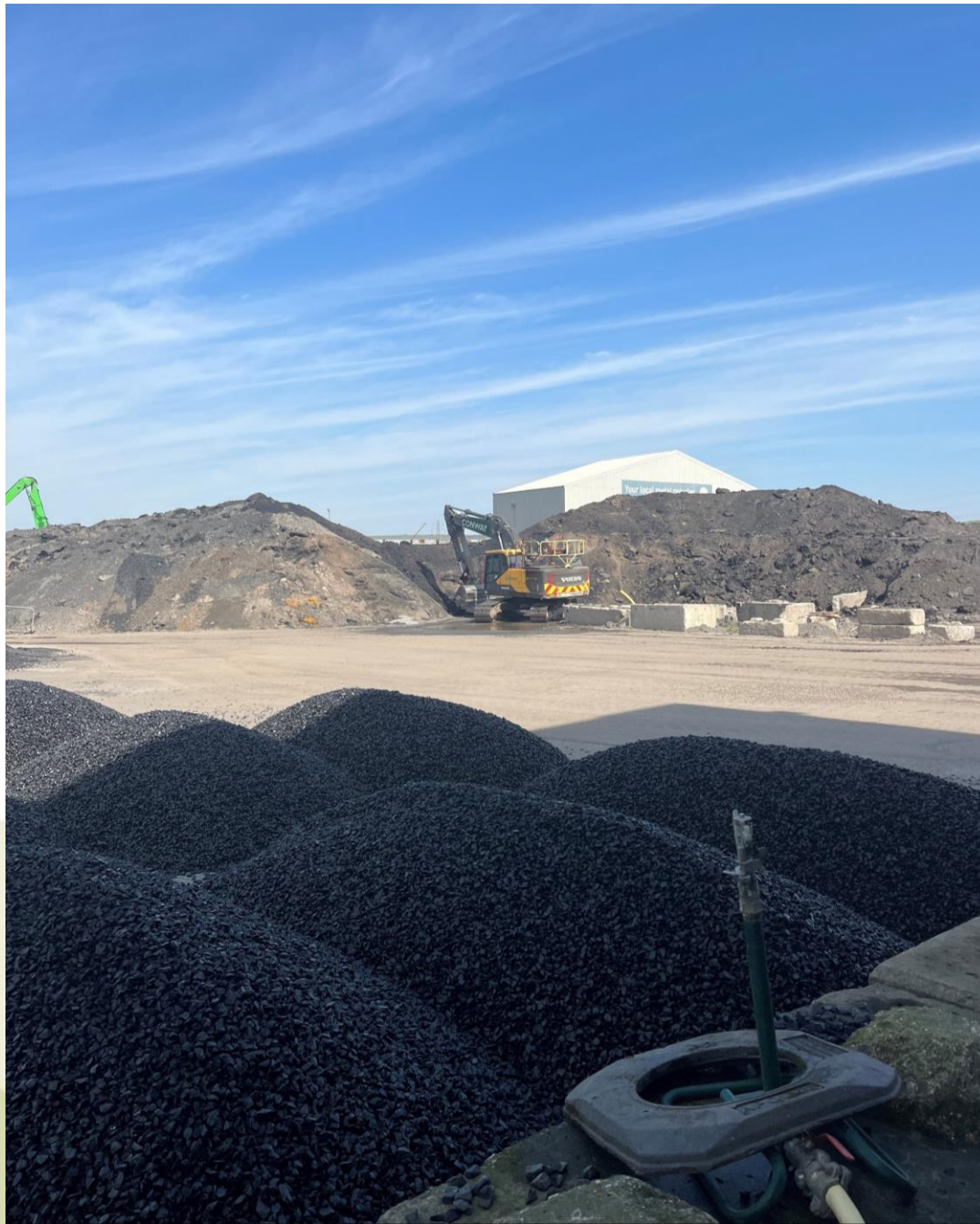
01284 764985 , www.pdeconsulting.co.uk























LW/894/CM– Plots 6 & 7, North Quay Road, Newhaven BN9 0AB For F M Conway

An alternate site layout (part retrospective) including the external processing of asphalt planings, temporary storage of containers, the installation of an LPG storage facility, the relocation of car and lorry parking, and a minor alteration to the configuration of acoustic fencing.

East Sussex County Council Planning Committee 12 November 2025